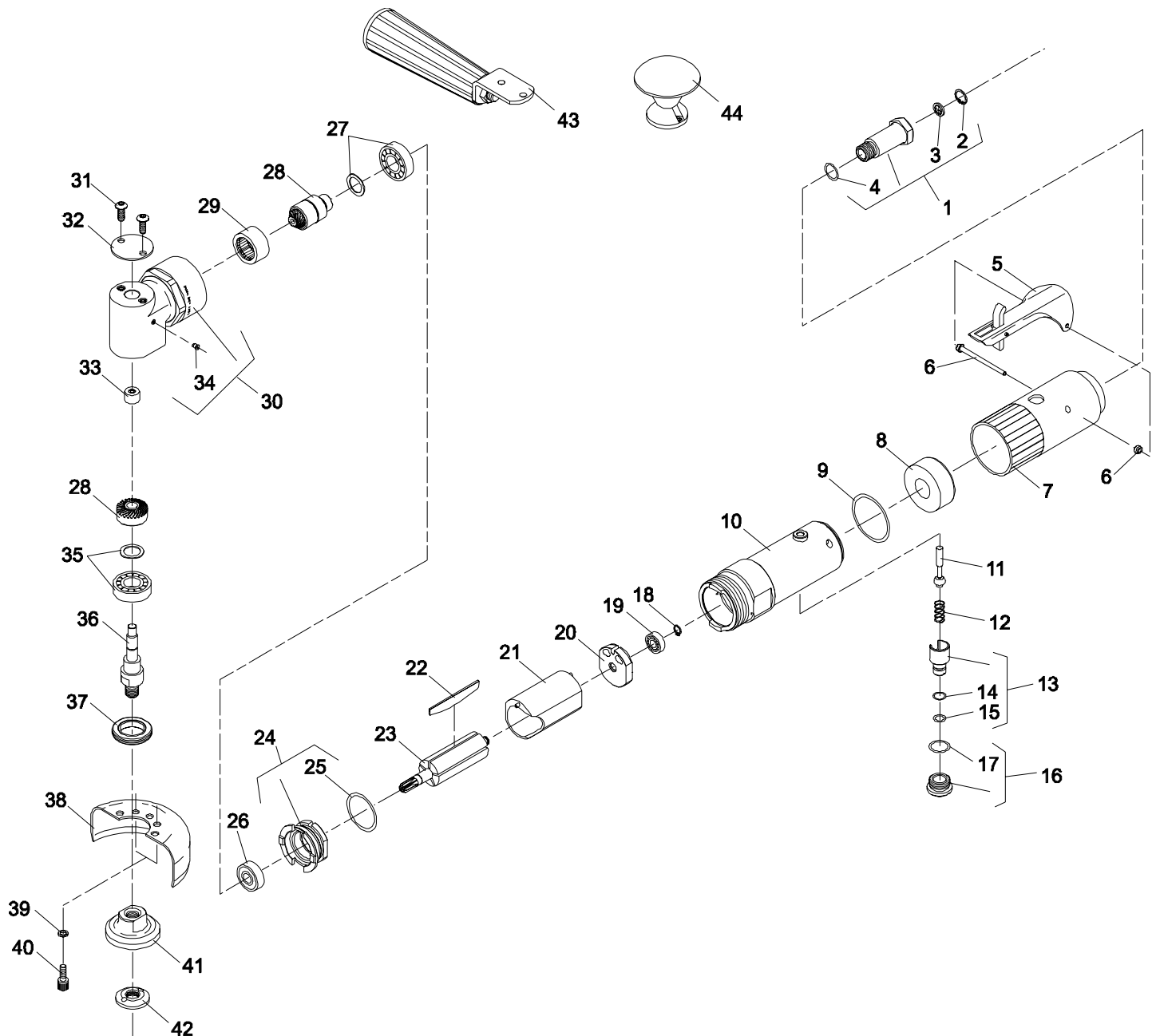




# PARTS LIST FOR 1967M RIGHT ANGLE GRINDER—4"—12000RPM (SERIAL "E")



**SIoux™  
TOOLS INC.**

2901 FLOYD BOULEVARD ■ PO BOX 507 ■ SIOUX CITY, IOWA 51102-0507 USA ■

Printed In U.S.A.



**PARTS LIST FOR  
1967M RIGHT ANGLE GRINDER—4"—12000RPM  
(SERIAL "E")**

| <b>Fig.<br/>No.</b> | <b>Part<br/>No.</b> | <b>Description</b>        |
|---------------------|---------------------|---------------------------|
| 1.                  | 54837               | Adaptor—Intake            |
| 2.                  | 21541               | Ring—Retaining            |
| 3.                  | 30463               | Screen                    |
| 4.                  | 14312               | Ring—"O"                  |
| 5.                  | 63258               | Ass'y—Lever               |
| 6.                  | 66344               | Ass'y—Pin                 |
| 7.                  | 04042               | Cover—Housing             |
| 8.                  | 40116               | Material—Exhaust          |
| 9.                  | 14333               | Ring—"O"                  |
| 10.                 | 64036               | Housing                   |
| 11.                 | 63241               | Ass'y—Valve               |
| 12.                 | 21427               | Spring                    |
| 13.                 | 54843               | Speed—Control             |
| 14.                 | 14394               | Ring—"O"                  |
| 15.                 | 14291               | Ring—"O"                  |
| 16.                 | 54844               | Retainer—Speed Control    |
| 17.                 | 14309               | Ring—"O"                  |
| 18.                 | 21491               | Ring—Retaining            |
| 19.                 | 10230               | Bearing—Ball              |
| 20.                 | 10552               | End Plate—Rear            |
| 21.                 | 65916               | Cylinder                  |
| 22.                 | 63192               | Vane (Set of 5)           |
| 23.                 | 54861               | Rotor                     |
| 24.                 | 65335               | End Plate—Front           |
| 25.                 | 14342               | Ring—"O"                  |
| 26.                 | 10220               | Bearing—Ball              |
| 27.                 | 63234               | Bearing & Spacer (Pinion) |
| 28.                 | 19736               | Gear Set                  |

| <b>Fig.<br/>No.</b> | <b>Part<br/>No.</b> | <b>Description</b>   |
|---------------------|---------------------|--|
| 29.                 | 10081               | Bearing—Caged Needle Roller  |
| 30.                 | 65388               | Ass'y—Angle Head<br>(Includes Figs. 29, 33 & 34)   |
| 31.                 | 07097               | Screw—Button Hd. Socket (#10-24 x 1/2")(2)*  |
| 32.                 | 35708               | Cover  |
| 33.                 | 10082               | Bearing—Caged Needle Roller  |
| 34.                 | 30375               | Fitting—Grease   |
| 35.                 | 65860               | Ass'y—Bearing & Spacer (Gear)  |
| 36.                 | 67962               | Spindle—Output   |
| 37.                 | 44776               | Retainer—Bearing   |
| 38.                 | 2347                | 4" Wheel Guard [Includes (2) Figs. 39 & 40]  |
| 39.                 | 09724               | Washer—Lock (2)*   |
| 40.                 | 07095               | Screw—Socket Hd. Cap Screw<br>(#10-24 x 1/2")(2)*  |
| 41.                 | 67963               | Hub—Grinding Wheel   |
| 42.                 | 67964               | Retainer—Grinding Wheel  |
| 43.                 | 2357                | Handle—Auxiliary   |
| 44.                 | 2359                | Knob—Auxiliary <span style="border: 1px solid black; padding: 0 2px;"> </span> Not Furnished With Tool |

Not Shown

|       |                |
|-------|----------------|
| 30505 | Wrench—5/8"    |
| 35545 | Wrench—Spanner |

Complete Assembly

|       |                           |
|-------|---------------------------|
| 67965 | Ass'y—Angle Head Complete |
|-------|---------------------------|

\*Order Quantity As Required

**FURNISH CATALOG, SERIAL, AND MODEL NUMBER WHEN  
ORDERING PARTS**

**SIoux<sup>TM</sup>  
TOOLS INC.**

2901 FLOYD BOULEVARD ■ PO BOX 507 ■ SIOUX CITY, IOWA 51102-0507 USA ■

Printed In U.S.A.